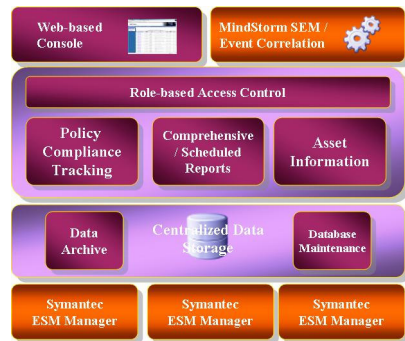


MindStorm Compliance Portal

For Symantec Enterprise Security Manager

MindStorm Compliance Portal Overview

MindStorm Compliance Portal (MCP) is a web portal for enhancing the capabilities of Symantec Enterprise Security Manager (ESM) on reporting, change & control, vulnerability tracking, auditing and policy compliance. MCP allows security administrators to customize or create reports based on ESM data which has been complied with internal and external policies. MCP also allows security administrators to set privileges for different users to access various reports and data.



Key Features and Benefits

Information Access Control

MCP enhances the information access control for ESM. The information access decisions can be based on the individual's roles and responsibilities within the organization or a group of users. This process of defining roles can control users on analyzing which system and information can be reviewed or generated report. And this is usually linked to the organization's security policy and any relevant regulations. For instance, Windows administrators can generate vulnerability reports on Windows Server Group or individual Windows Server only, while Unix administrators can only view Unix server reports.

User Privileges Control

MCP allows administrators to control user privileges on their site using permission functionality. There are different types of privilege that administrators can permit the user to access based on their job responsibilities. For instance, auditors can only view data and generate reports but cannot add annotations or change vulnerability ticket status.

Policy Compliance Tracking

MCP provides a Vulnerability Tracking Dashboard that allows administrators easy to understand the policy compliance status of each business asset such as how many new vulnerabilities found, how many have been fixed, and how many are still pending on the specific server. Based on the policy compliance tracking capability, security manager can easily to assign responsibilities to system administrators on system vulnerabilities and facilitate information sharing among different users.

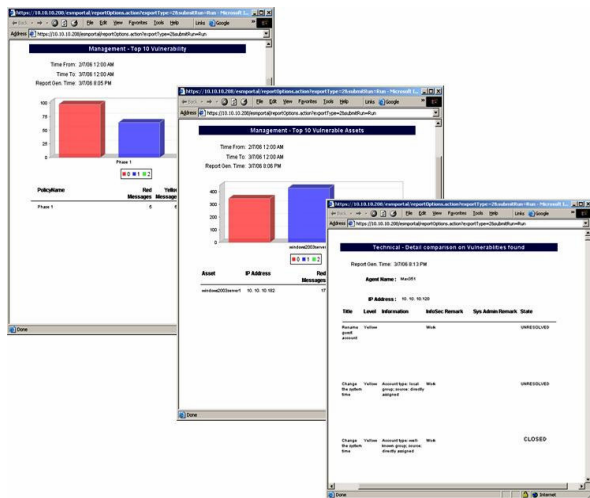
The dashboard provides a fast and easy filtering feature for customers to query vulnerabilities based on severity, status or individual server by just a simple click.

ID	Agent Name	Policy	Rating	Asset Class	Status	Last Annotation
289025	03/07/2005 08:51 Mac351	Password Strength	Red	Normal	Flow	one to sure it is ok?
289077	03/07/2005 08:51 Mac351	Login Parameters	Red	Normal	Flow	
289076	03/07/2005 08:51 Mac351	File Watch	Red	Normal	Flow	
289076	03/07/2005 08:51 Mac351	File Attributes	Red	Normal	Flow	
289073	03/07/2005 08:51 Mac351	Disk Quota	Red	Normal	Flow	
289072	03/07/2005 08:51 Mac351	Disk Quota	Red	Normal	Flow	
289061	03/07/2005 08:51 Mac351	Backup Integrity	Red	Normal	Flow	
289000	03/07/2005 08:51 Mac351	Backup Integrity	Red	Normal	Flow	
288785	03/07/2005 07:51 Mac351	Password Strength	Red	Normal	Flow	
288797	03/07/2005 07:51 Mac351	Login Parameters	Red	Normal	Flow	
288796	03/07/2005 07:51 Mac351	File Watch	Red	Normal	Flow	
288796	03/07/2005 07:51 Mac351	File Attributes	Red	Normal	Flow	
288793	03/07/2005 07:51 Mac351	Disk Quota	Red	Normal	Flow	
288792	03/07/2005 07:51 Mac351	Disk Quota	Red	Normal	Flow	
288680	03/07/2005 07:51 Mac351	Backup Integrity	Red	Normal	Flow	

Enhance ESM Reporting Capabilities

MCP provides more advanced reports templates for different audiences such as:

- **Auditing Report** - report on which server vulnerability has been fixed this month
- **Management Report** - Top 10 Vulnerability Assets, Remediation Report
- **Technical Reports** - with overall vulnerability listing
- **Policy Compliance Report** - a report for policy compliance tacking
- **Departmental Report** - generated reports by server group or individual server with vulnerability listing
- **Comparison Reports** - comparison between two vulnerability scanned results, which allow security administrator to verify whether the vulnerabilities found earlier have been fixed, and at the same time to identify new vulnerabilities



Multiple Report Formats

MCP provides different languages report layout including English, Simplified & Traditional Chinese and Japanese. All reports can be exported to PDF, Excel, HTML and image formats.

Auto Report Generation and Distribution

MCP provides report scheduling feature for security manager or system administrators easily to generate reports and send to desired users by email.

Asset Information Management

MCP Asset Information Management allows administrators to add more details asset information that can accelerate the response time, identify the asset location and contact the system owner which new vulnerability found. Asset information includes the name of the asset, operating system, IP, MAC address information, physical location and system owner.

Centralized Data Storage

MCP combines two or more ESM Managers' data into a single database for centralized data storage. This allows administrators to generate the overall reports across multiple ESM Managers for centralized management.

Advanced Data Management

MCP collects processes and stores ESM data automatically and comes with a database tool for database maintenance such as purging, archiving and backup ESM data without requiring a full-time DBA. The DB Tool also provides alerting functions to monitor the database server and send alert notification when the hard disk space size is insufficient or database size hits the limit etc...

MCP supports compression and encryption for the data backup and restore to enhance the database security and integrity of the data storage for comply to regulatory compliance such as ISO 17799/BS 7799

System Requirements:

- Intel P4 - 2GHz
- 1GB Ram
- 80GB Hard drive
- OS: MS Windows 2003 with latest SP
- Database Server: MS SQL Server 2000 with latest SP